

## FGFR1-NT

**Catalog Number:** 26386

**Gene Symbol:** FGFR1, BFGFR, CD331, CEK, FGFBR, FLG

**Description:** Anti-FGFR1 N-Terminal Mouse Monoclonal Antibody

**Background:** The protein FGFR1 is highly conserved between members and throughout evolution. This particular family member of FGFR1 binds both acidic and basic fibroblast growth factors and is involved in limb induction. Mutations of FGFR1 protein have been associated with Pfeiffer syndrome, Jackson-Weiss syndrome, Antley-Bixler syndrome, osteoglophonic dysplasia, squamous cell lung cancer and autosomal dominant Kallmann syndrome.

**Immunogen:** A synthetic peptide from the N-terminal region of FGFR1, human origin.

**Tested Applications:** ELISA, WB, IHC

**Recommended Dilutions:**

ELISA: 1:1000-1:2000

WB: 1:500-1:1000

IHC: 1:50-1:100

**Concentration:** 1 mg/ml

**Host:** Mouse

**Clonality:** Monoclonal

**Purity:** Purified from ascites

**Format:** Liquid

**Preservative:** No

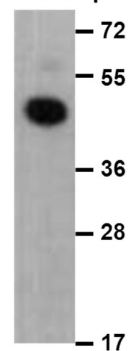
**Constituents:** PBS (without  $Mg^{2+}$  and  $Ca^{2+}$ ), pH 7.4, 150 mM NaCl, 50% glycerol

**Species Reactivity:** Recognizes N-Terminal (22-376 aa) and full-length FGFR1 of vertebrates.

**Storage Conditions:** Store at  $-20^{\circ}C$ . Avoid freeze / thaw cycles.

### Western blot:

FGFR1 N-terminal protein



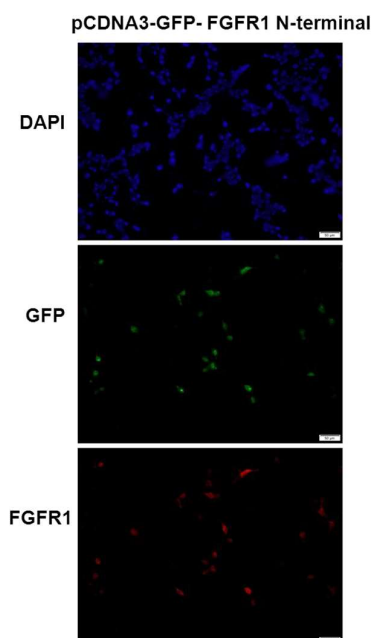
WB: anti-FGFR1 N-terminal mAb

### Western blot analysis of recombinant FGFR1 N-terminal protein.

Purified His-tagged FGFR1N-terminal protein (22-376 aa, 45KD) was blotted with anti-FGFR1 N-terminal monoclonal antibody (Cat. # 26386).

FOR RESEARCH USE ONLY. NOT FOR DIAGNOSTIC APPLICATIONS

## Immunofluorescence:



## Immunofluorescence of cells expressing FGFR1 N-terminal proteins with anti-FGFR1 N-terminal antibody.

HEK293T cells were transfected with pCDNA3-GFP-FGFR1 N-terminal plasmid, then fixed and stained with anti-FGFR1 N-terminal monoclonal antibody (Cat. # 26386).

---

FOR RESEARCH USE ONLY. NOT FOR DIAGNOSTIC APPLICATIONS